

ALABAMA

# Experience Chemistry®

Bismuth is a soft, naturally occurring metal that is mined in North America, South America, and Asia. Typically, this metal has a bright, silvery surface—but not always. Why is the bismuth pictured on the cover multicolored? What uses could a metal like this have in your everyday life?

Explore the phenomenon of how bismuth crystallizes into a rhombohedral lattice structure, forming crystals like the one shown on the cover.

Visit [savvas.com/experiencechemistry](http://savvas.com/experiencechemistry) to learn more.

## VOLUME 1

### STORYLINE 1

#### Atoms, Elements, and Molecules

- 1 Atomic Structure
- 2 The Periodic Table
- 3 Chemical Bonding

### STORYLINE 2

#### Understanding Chemical Reactions

- 4 Physical Properties of Materials
- 5 Chemical Quantities
- 6 Chemical Reactions
- 7 Stoichiometry
- 8 Thermochemistry

## VOLUME 2

### STORYLINE 3

#### The Chemistry of Climate Change

- 9 The Behavior of Gases
- 10 Weather and Climate
- 11 Global Climate Change

### STORYLINE 4

#### The Dynamics of Chemical Reactions and Ocean Acidification

- 12 Reaction Rates and Equilibrium
- 13 Acid-Base Equilibria
- 14 Ocean Acidification

### STORYLINE 5

#### Industrial Applications

- 15 Oxidation-Reduction Reactions
- 16 Organic Chemistry
- 17 Nuclear Processes
- 18 Green Chemistry

**FLINN  
SCIENTIFIC**

Flinn Scientific, the leading supplier of lab equipment, chemicals, and safety solutions, partners with Experience Chemistry® to provide an exciting hands-on experience. Look for Flinn labs, engineering design challenges, performance-based assessments, videos, virtual reality simulations, and lab kits.

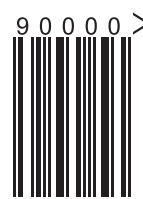
**SAVVAS**  
LEARNING COMPANY

Savvas.com

ISBN 979-8-2130-6950-1



9 798213 069501

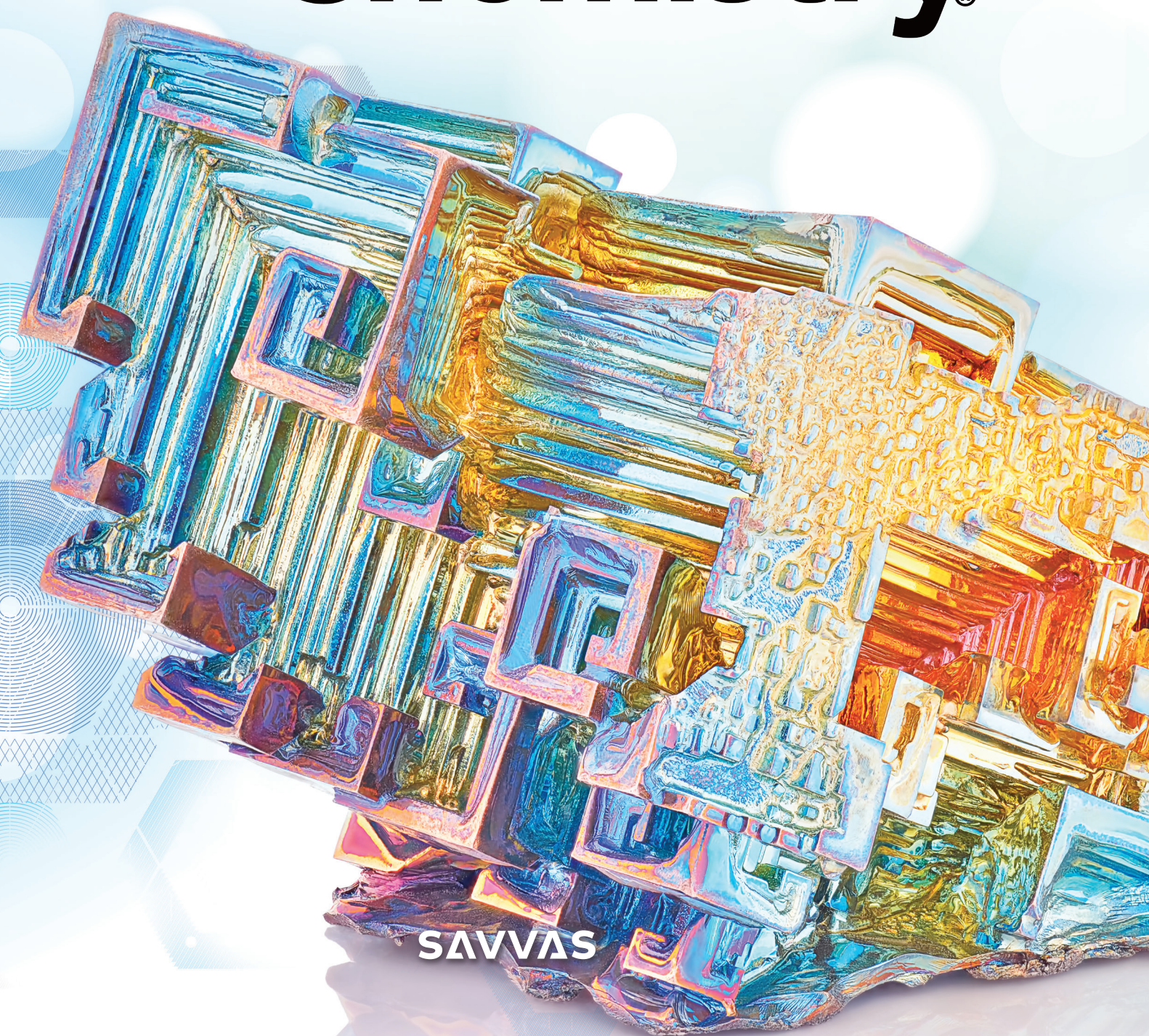


SAVVAS

ALABAMA

# Experience Chemistry®

Experience  
Chemistry®



SAVVAS